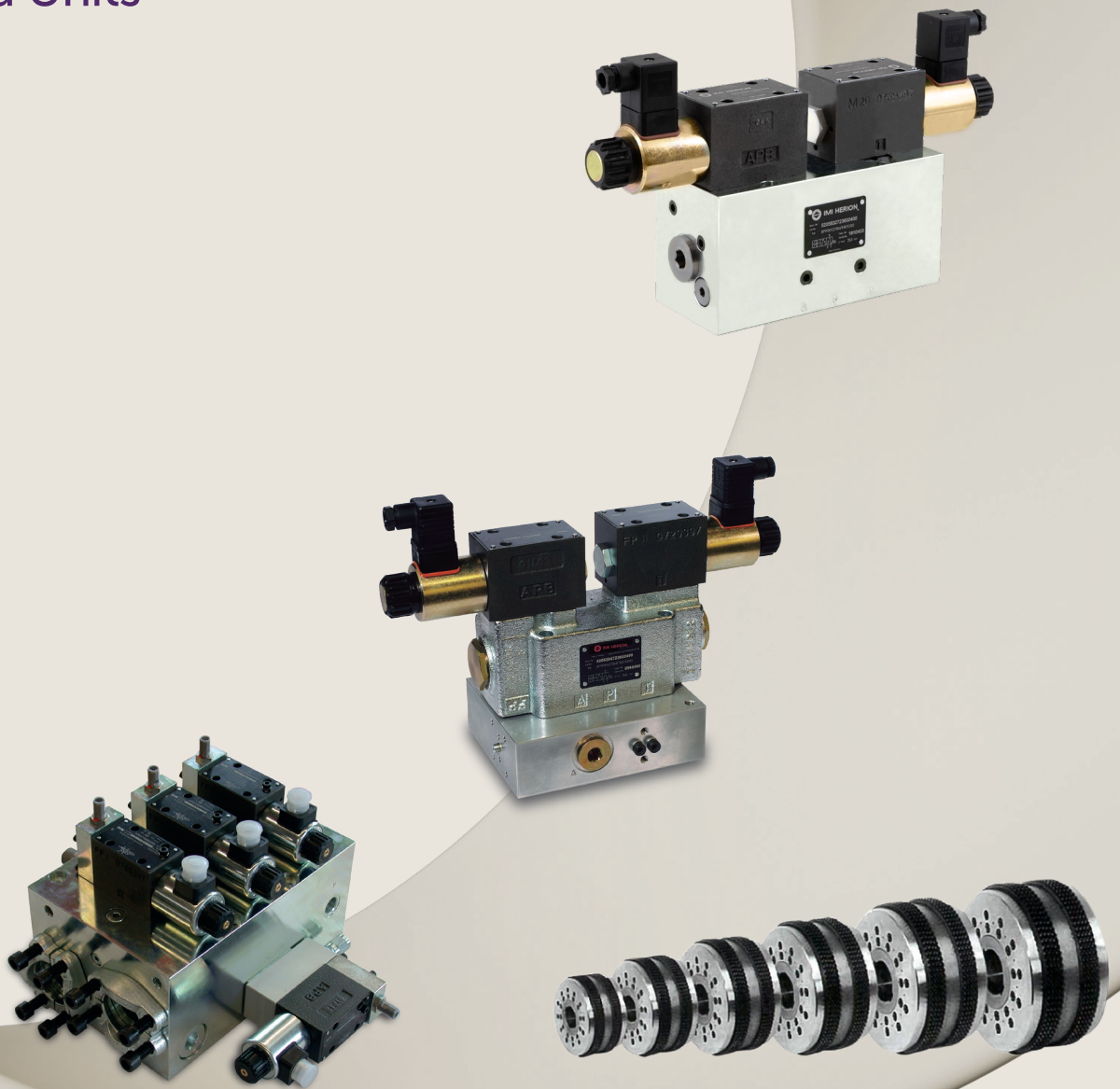


# Fluid Control

Our product brands:  
IMI Herion

Hydraulics — Safety & Press Technology,  
Components and cylinders, Systems, Power  
Packs and Units



Breakthrough  
engineering for  
a better world

Contents	Introduction	3
	Safety, economy and productivity at the highest level	4
	Hydraulic Safety Valves and Safety Solutions	5
	Hydraulic Systems and Components for Presses and Drive Technology	6
	Hydraulic Valves and Actuators	7
	Hydraulic Systems	8
	Hydraulic Power Packs and Units	9
	Extract from the product options	10

# Breakthrough engineering for a better world

We create breakthrough solutions which accelerate the safety, reliability and performance of everyday processes. Our valves and complete system solutions control liquids and gases, enabling machine builders to improve design functionality and keep safety and sustainability at the forefront of innovation.

For over 80 years, we have helped our customers improve the reliability and efficiency of their machines for diverse end markets. Working in close customer partnership, we continuously push the boundaries of technology, offering a wide selection of components and tailored solutions. Meeting equipment manufacturers' needs includes everything from helping provide traceability for consumers, to reducing waste in critical resources and delivering a premium cup of coffee.

Through flexible, scalable and agile innovation, we help our customers solve their current challenges and create competitive advantage for the future.

Breakthrough engineering you can count on.



# Safety, economy and productivity at the highest level

Only a company that acts responsibly for humanity and the environment, whilst at the same time maximizing business and efficiency, is fit to meet the challenges of the future. The IMI Herion brand name accepts this challenge and has in the meantime been producing products and solutions for hydraulics, safety technology and the mechanical press engineering industries for some 50 years. As far as we are concerned, a safe working environment, product quality and safety have absolute priority.

We create the solutions to the problems that our clients want us to resolve with a combination of technology, innovation and technical know-how and we offer them THE decisive advantage in the race for the best technology.

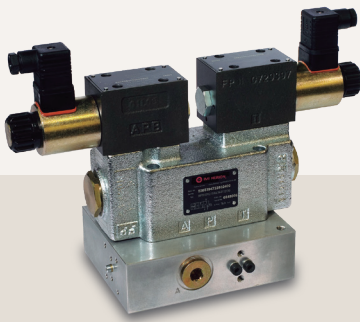
→ Find out more  
[www.fluidcontrol.imiplc.com](http://www.fluidcontrol.imiplc.com)



# Hydraulic Safety Valves and Safety Solutions

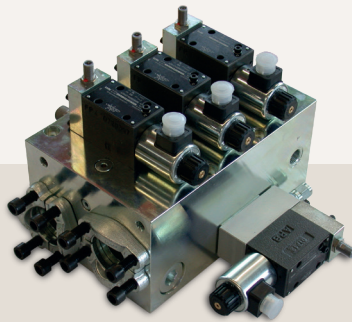
IMI Herion products combine safety and economic efficiency at the highest level and are the reference standard' in many machines and systems the world over. IMI Herion hydraulic safety valves provide increased productivity – safely. The self-monitoring double valves make external monitoring components superfluous – this saves space and makes monitoring systems

no longer current-dependent. In addition, time is saved when making exchanges thanks to the quick mounting on connecting plates and in this way any downtime of your machines is reduced. We will be happy to discuss your safety applications with you – to assure protection of both people and machines.



## 3/2 – Directional valves (to 160 bar) DN 10, 16

- Intrinsically safe
- Safe depressurizing
- To DIN EN ISO 16092 – 1/2.
- To DIN EN ISO 13849 – 1/2.
- BG – Certified for Cat. 4



## Hydraulic 2oo3 switch-off blocks for turbines

- SIL 3, TÜV certified
- DN 16 to 50
- ATEX versions also available



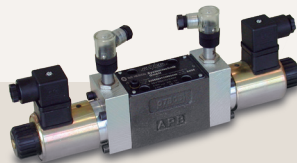
## High pressure PSV 3/2 Way Safety Valve (up to 350 bar)

- Intrinsically safe
- Safety function: Pressure release
- To DIN EN ISO 16092 – 1/2.
- To DIN EN ISO 13849 – 1/2.
- BG – Certified for Cat. 4



## Accumulator safety valves

- TÜV type examination certified to pressure equipment directive 2014/68/EU
- Screw-in cartridge valves
- High blowoff
- Tightly closing poppet valve



## Directional valves

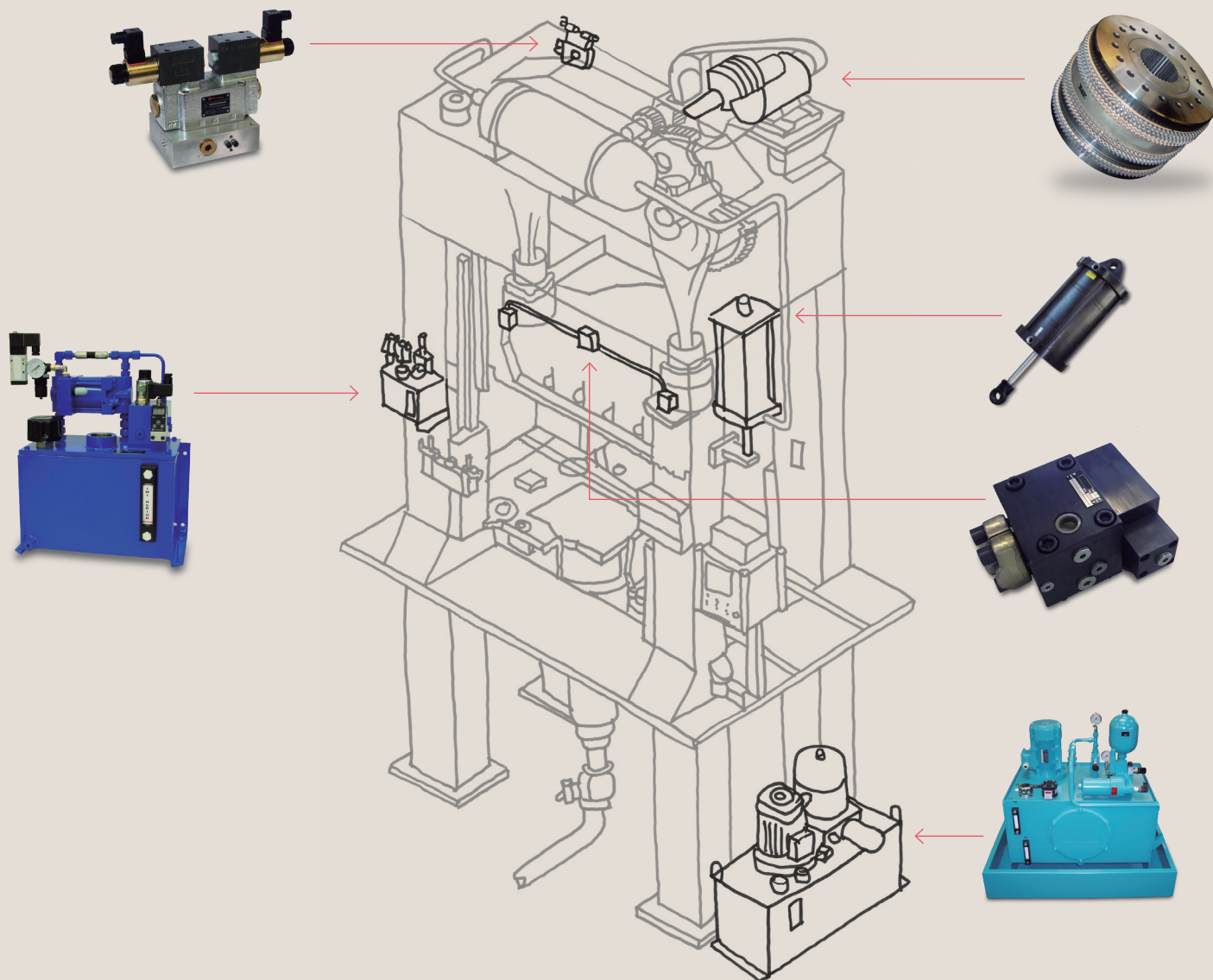
- Position monitored
- DN 6 and 10



## ATEX-Directional valves

- Intrinsically safe
- Low power consumption





# Safety & Press Technology, Components and cylinders, Systems, Power Packs and Units

We have been developing and producing hydraulic safety components and drive systems for equipping mechanical presses for over 50 years. Thanks to international approvals and test certificates IMI Herion products are in use worldwide in safety-relevant systems.

## Our products for presses and press safety:

- Hydraulic clutch-brake combinations in different designs
- Press safety valves
- Hydraulic overload safety devices
- Cylinder for the ram weight compensation
- Hydraulic standard and special units

## Application for press and drive technology:

- Mechanical presses
- Servo presses
- Spindle presses

Find out more  
[www.imiplc.com](http://www.imiplc.com)

# Hydraulic Valves and Actuators

## More know-how, more efficiency, more solutions

IMI Herion hydraulic valves and actuators are used in general machinery construction and many other fields.

We manufacture products both for your standard or your special applications... Hydraulic and individual components in proportional and on/off technology are used in all areas of the industry in hydraulic controls and drives.

### Applications:

- General machine construction/ mechanical engineering
- Vehicle construction
- Plant construction

### Standard way valves DN 3 to DN 25

- For hydraulic applications up to 350 bar
- Directional valves, solenoid-actuated, also with mechanical detent
- Directional valves with inductive or electro-mechanical switch position monitoring
- Pipe valves DN 6, poppet and spool style
- Various types of actuation

### Proportional valve range from DN 6 to DN 25

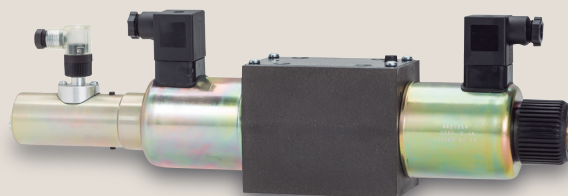
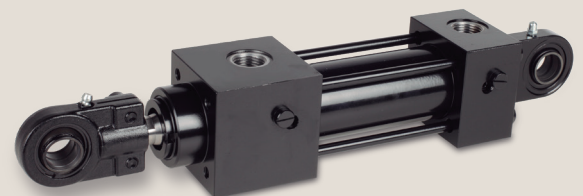
- For applications up to 350 bar
- Directional valves
- Pressure valves
- Flow control valves
- Integral or external electronics

### Pressure and flow control valves

- For applications up to 350 bar
- Pressure valves DN 6 to DN 25
- Flow control valves DN 6 and DN 10
- Check valves
- DN 6 and DN 10
- Different mounting options

### Hydraulic cylinders

- Rod-type cylinders up to piston diameter 200 mm









# Hydraulic Systems

The things we can do - just a few examples of IMI Herion hydraulic systems



Hydraulic controls for Voith-Schneider propeller drives e.g. on harbour tugs



Hydraulic remote control of the engine/gear clutch on special utility vehicles



Hydraulic damping cylinders for damping systems on articulated buses



IMI Herion customized control blocks for hydraulic grippers

Need a special system?



Please contact us at

✉ [herionsystemtechnik@imi-precision.com](mailto:herionsystemtechnik@imi-precision.com)

# Hydraulic Power Packs and Units

Whether it be a small unit or large installation ... we will plan, develop and manufacture your specific solution. Even with the most demanding requirements, special versions, explosion-proof units or multifunctional installations, IMI Herion provides everything from one single source.

## Applications for units:

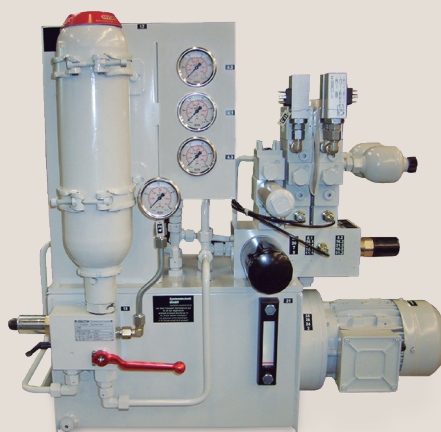
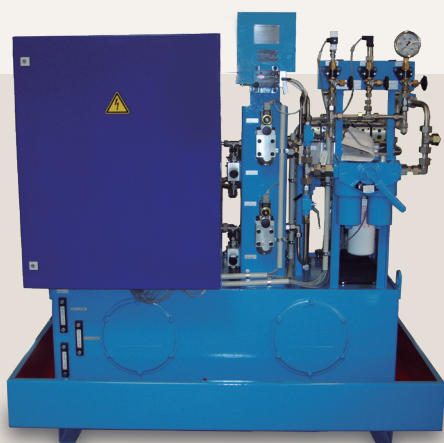
- General machine construction/mechanical engineering
- Energy technology (Turbine control systems)

## Available tank capacities:

- Standard sizes up to 800l
- Special sizes on request

## Advantages and special services:

- Sub-base assemblies to minimize piping
- Units include return flow filters, pressure and control valves, pressure gauges in one single package
- Development of special hydraulic units
- Explosion proof versions possible
- Easy retrofit
- Service contracts



Need a special  
power pack or unit?



Please contact us at

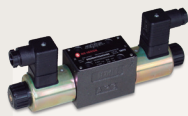
✉ [herionsystemtechnik@imi-precision.com](mailto:herionsystemtechnik@imi-precision.com)



FIND OUT MORE:  
[imiplt.com](http://imiplt.com)

# Extract from the product options

## Directional valves



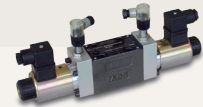
Directional control valve



Seat valves



Directional control valve



Directional control valve

Material				
Nominal bore (DN), Port size	6, 10, 16, 25	6	6, G3/8	6, 10
Function	3/2, 4/2, 4/3	2/2, 3/2	4/2, 4/3	3/2, 4/2, 4/3
Key Features	DIN 24340 & ISO 4401	DIN 24340 & ISO 4401 (CETOP03)		DIN 24340 & ISO 4401 directly actuated. Electrical position monitoring

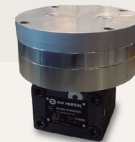
## Pressure valves



Pressure valves



Pressure relief valves



Pressure valves

Material			
Nominal bore (DN), Port size	6, 10	6, 10, G1/2, G3/4	10, 25
Function	2 way		2 way and 3 way
Key Features	DIN 24340 & ISO 4401, directly controlled	DIN 24340 & ISO 6264, directly controlled	DIN 24340 & ISO 6264, indirectly controlled, also pneumatically actuated available

## Flow control & check valves



Throttle and throttle check valves



Flow control valves



Double throttle check valve



Pressure released double check valves

Material				
Nominal bore (DN), Port size	8, 10, 12, 16, 20, 25 G1/4- G1 1/4	6, 10	6, 10	6, 10
Function	Throttle	2 way and 3 way	Throttle	Intake or return flow throttle
Key Features	High repeatability	DIN 24340	DIN 24340 & ISO 4401	DIN 24340 & ISO 4401



## Proportional valves



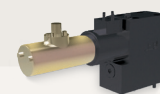
Proportional directional control valves



Proportional directional control valves



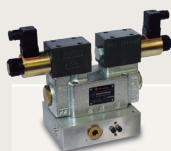
Proportional pressure valves



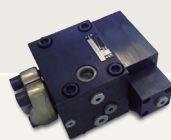
Proportional flow control valve

Material				
Nominal bore (DN), Port size	6, 10, 16, 25	6,10	6, 10, 25	6
Function	3/2, 4/2, 4/3	4/3	2 way and 3 way	2 way
Key Features	DIN 24340 & ISO 4401	With integrated digital electronics	DIN 24340 & ISO 6264 directly & indirectly controlled	DIN 24340

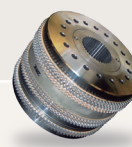
## Press technology



Press Safety valve



Overload protection



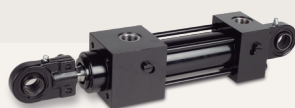
Clutch-Brake Combination



Ram weight cylinder

Material				
Nominal bore (DN), Port size	10, 16	16 bis 63	KB03 to KB300	Piston Ø 100-500 mm
Function	3/2			Single acting
Key Features	Intrinsically safe, Safe depressurizing, to EN 692, DIN EN ISO 13849 – 1 & 13849 – 2, Cat. 4	Machine protection High response rate	Wear-free Low switching noise Constant braking angles Low energy consumption	Self-lubricating Long lifetime

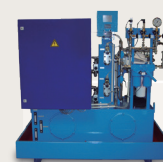
## Actuators



Actuator

Material	
Nominal bore (DN), Port size	Piston Ø up to 200 mm
Function	Double acting
Key Features	To CETOP/ISO up to 250 bar (higher pressures on request) With accessories

## Units & Power packs



Units & Power packs

Material	
Nominal bore (DN), Port size	Standard tank sizes, special tank sizes on request
Function	According to customer specifications
Key Features	Compact Filters easy to replace

IMI operates four global centres of technical excellence and a sales and service network in 50 countries, as well as manufacturing capability in Brazil, China, the Czech Republic, Germany, India, Mexico, Switzerland, the UK and the USA.

Supported by distributors worldwide.

For further information, scan this QR code or visit

[www.imiplc.com](http://www.imiplc.com)



## Fluid Control

Our product brands:

**IMI Buschjost**

**IMI FAS**

**IMI Herion**

Due to our policy of continuous development, IMI reserves the right to change specifications without prior notice.

z10206BR en/06/24

